

Product Development

QUICKGEN
TECHNOLOGIES



Conceptualized by you, made by us.

We coordinate all seven steps of the product development process under one roof. Our in-house design, engineering, branding, and marketing professionals work cohesively together. We have developed strong communication protocols and supporting processes that create a wellintegrated experience across department lines — streamlining the product development process.



Solutions tailored to your needs.

No matter the industry or size of project, whether you're building a new idea or revamping an existing one, everything we create is done to a high standard of excellence and customized to the unique needs of each one of our clients. We approach every project with out-of-the-box thinking and strive for innovation that sets our clients apart from their sector.



We adopt a user-centred approach.

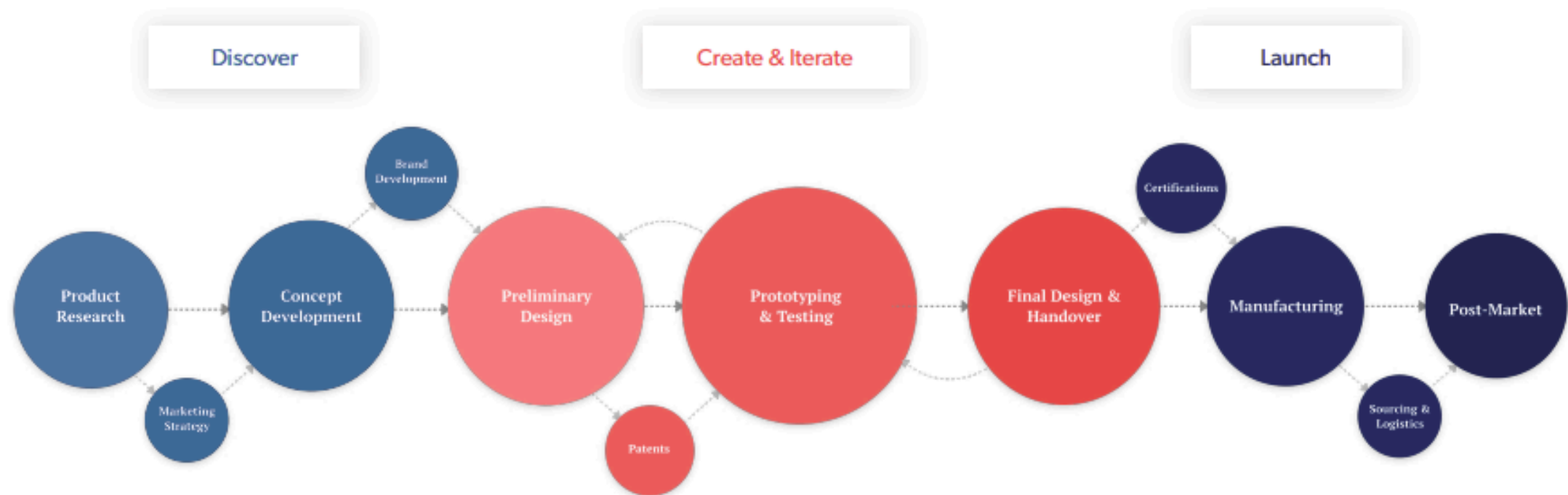
We elevate products through a user-centred approach. In every facet of our design, marketing, branding, and engineering we focus on the user. Our team researches, analyzes, and innovates to solve your user's problem through the creation of remarkable products and experiences —and always with style.



Our Philosophy

Our Product Development Process

Over our 8+ years of combined experience, we have developed a wide range of expertise and evolved our process to move ideas off the ground and achieve groundbreaking results. But our process doesn't create a standard or uniform experience. Not every experience will be the same or require every step. Our team can step in at any point, clients are free to work with us for only certain pieces of their development and branding process, or from start to finish. Each client experience is customized but often follows a common trajectory that we have divided into three general phases.



Our Process



May
2026

80+

CLIENTS

200+

PROJECTS

06+

YEARS

Product **Portfolio**

QuickComm

An AI-powered communication and task management platform designed to streamline frontline team operations in real-time, from hospitality to healthcare and beyond.

Real-Time Communication

Converts staff conversations into structured tasks.

AI Task Management

Routes tasks, assigns owners, and tracks progress automatically.

Live Insights

Provides managers with real-time dashboards and performance analytics.



QUICKCOMM

WORLD'S 1ST AI-POWERED FRONTLINE EARPIECE:

Turn frontline conversations
into instant action—**no typing, no radios, no delays**

SCENTIX

A portable wearable device designed to eliminate unwanted odors and enhance air quality. Offers personalized environmental control in real time.

Odor Elimination

Smart sensor integration for effective scent control.

Portable Design

Compact and wearable for on-the-go use.

Environmental Control

Adjusts air quality based on real-time data.



SCENTIX

YOUR PERSONAL ATMOSPHERE, PERFECTED:
*The wearable 3-in-1 that scents, cools,
and refreshes on the go.*

Provectus Breath Analyser

A breath analysis device using NASA's e-nose technology to provide non-invasive health diagnostics. Detects health markers in exhaled breath.

NASA Technology

Advanced sensor integration for precise diagnostics.

Non-Invasive

No blood samples required for health detection.

Real-Time Analysis

Instant breath analysis and health data visualization.

IoT Breath Analysis Device

NASA-POWERED HEALTH IN THE PALM OF YOUR HAND:

Advanced metabolic analysis and real-time diagnostics, made accessible for everyone, everywhere.



Real-time Stress Monitor

A wearable device that tracks electrodermal activity (EDA) to monitor stress and health conditions in real-time. Ideal for chronic disease management and mental health monitoring.

Clinical-Grade Accuracy

Provides precise real-time health diagnostics.

Non-Invasive Monitoring

Tracks skin conductivity without discomfort.

Real-Time Data

Syncs with mobile apps for continuous patient monitoring.



iPhone Smart Case

An interactive iPhone case that features a display for notifications and integrates wireless charging for convenience.

Interactive Display

Provides real-time notifications without unlocking the phone.

Wireless Charging

Supports convenient, cable-free charging.

Sleek Design

Compact and functional for everyday use.

Secondary Display Smart Case

PROTECTION WITH A PULSE:

A tactical smart case featuring an interactive rear display & integrated power to redefine your iPhone experience.



Personal AI Pendant

A BLE audio device that captures and plays voice interactions while offering AI-powered support through a paired iOS app.

BLE Audio Capture & Streaming

Streams high-quality audio to iOS for seamless interaction.

Wake Word & User Feedback

Supports wake-word detection ("Hey Aria") with LED and button feedback.

Offline Storage & OTA Updates

Records and syncs data when offline, with over-the-air updates.

PERSONAL AI PENDANT

YOUR PERSONAL AI BRIDGE:

A high-fidelity wearable pendant for seamless, hands-free voice capture and real-time interaction.



AI Pendant

A wearable companion designed to support focus, routines, and daily well-being with personalized, low-friction guidance.

Focus & Attention Support

Nudges for focus-session timers and inactivity alerts.

Smart Reminders & Routines

Helps manage tasks and daily routines, sending timely reminders.

Calm, Sleep & Sensory Tools

Includes breathing guidance, wind-down routines, and sound options for relaxation.

AI PENDANT

MASTER YOUR FOCUS, SCREEN-FREE:

A discreet wearable companion providing private nudges for seamless routines & daily wellbeing.



Smart Glucose Meter

A smart glucose meter offering accurate real-time blood glucose tracking for effective diabetes management. Syncs with health apps for data monitoring.

Real-Time Tracking

Provides precise glucose readings instantly.

Seamless Integration

Syncs with mobile health apps for data collection.

User-Friendly

Easy-to-use interface for daily health monitoring.



The advertisement features a smartphone on the left displaying a glucose reading of 86 mg/dL at 7:23 AM, labeled as 'Pre-Meal'. Below the reading, there are options for 'More Details' and 'View Journal'. A notification from 'AdeleAI' is visible at the bottom of the screen. To the right of the smartphone is the physical smart glucose meter, which is black and displays the 'adele HEALTH' logo vertically. The meter also shows a Bluetooth symbol and the time 10:15. Below the smartphone, a black banner contains the text 'SMART GLUCOSE METER' in white. Underneath the banner, the text reads 'INSIGHT, AT A GLANCE: Designed to measure, connect, and deliver real-time health intelligence effortlessly.'

SMART GLUCOSE METER

INSIGHT, AT A GLANCE:
Designed to measure, connect, and deliver real-time health intelligence effortlessly.

App Adjusted Cushion

A portable seat cushion offering app-controlled comfort, ideal for ergonomic support during long hours of sitting.

Inflatable Design

Provides personalized support for the hip area.

App-Controlled

Adjust firmness and comfort levels through an app.

Portable Use

Ideal for use in cars, offices, and other seating environments.



App Adjusted Air Seat

COMFORT, PERSONALIZED TO YOU:
Designed to adjust, support, and adapt for smarter, pressure-free seating.



Front Parking Sensor

Smart Proximity Parking Assistance to make tight parking easier and safer with live alerts.

Realtime Distance Detection

Developed an affordable hardware-software solution for front-parking assistance.

Mobile Interface

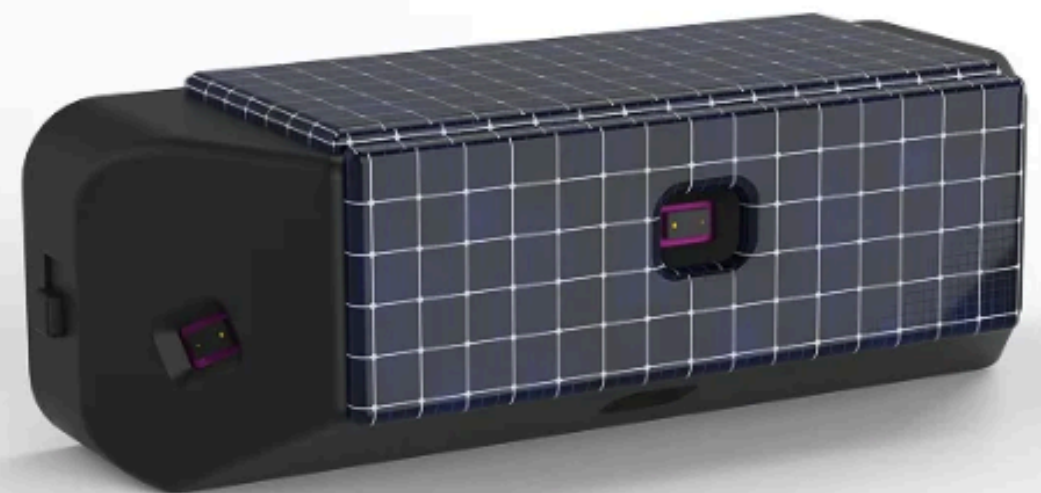
The system pairs real-time distance detection via IR sensors with a mobile interface.

Alerts

Provides visual and audio proximity alerts for navigating tight spaces.

Front Parking Sensor

Makes tight parking easier and safer with live alerts



Holly Phone

A voice-activated assistant that turns your iPhone into a hands-free productivity tool with a sleek design and always-ready utility.

Voice-Activated

Enables hands-free operation for productivity.

AMOLED Display

Provides clear, high-quality visual feedback.

MagSafe Design

Easily attaches for a seamless experience.

HOLLY PHONE

MEET YOUR IPHONE'S NEW BRAIN:

A snap-on AI assistant with a vivid AMOLED display and voice-first intelligence for seamless, hands-free productivity.



MicroTracker

A Bluetooth-based tracking device that provides real-time location updates for personnel and assets in large facilities.

Precise Location Tracking

Tracks personnel and assets via Bluetooth.

Low Power Consumption

Designed for full-shift use with minimal power draw.

Instant Notifications

Alerts for missed items or personnel tasks.

BLE Item Finding Tag

YOUR ESSENTIALS, ALWAYS IN REACH:

The ultra-thin BLE tracking sticker that brings smart proximity and peace of mind to your daily life.



Automated Exam Scanner

A compact and teacher-friendly system designed to read and process barcodes on exam papers quickly and accurately.

Optimized for Speed

Ensures quick scanning and processing for classroom use.

Compact Design

Easy to integrate into classroom settings without taking up much space.

Efficient Data Management

Integrates with other educational tools for seamless data tracking.

Automated Exam Scanner

SMART ASSESSMENT, SIMPLIFIED:
The AI-powered scanner that reads, links, and delivers results instantly.



Medical Headlamps

Advanced headlamps providing high-intensity illumination for surgeons and medical staff, with ergonomic wearability for long procedures.

High-Intensity Light

Bright, focused illumination for surgeries.

Ergonomic Design

Comfortable for long-term wear.

Battery-Powered

Ensures reliable light during procedures.



Medical Headlamps

CLARITY, WHERE IT MATTERS MOST:
*Engineered to illuminate, focus, and perform
with precision in every procedure.*

Got Questions ? Connect Now



 quickgentech.com

 info@quickgentech.com

Pakistan

Office 1307,
NSTP NUST,
H-12 Islamabad

Australia

Suite 96,
58-62 Water Street,
Toowoomba, Queensland